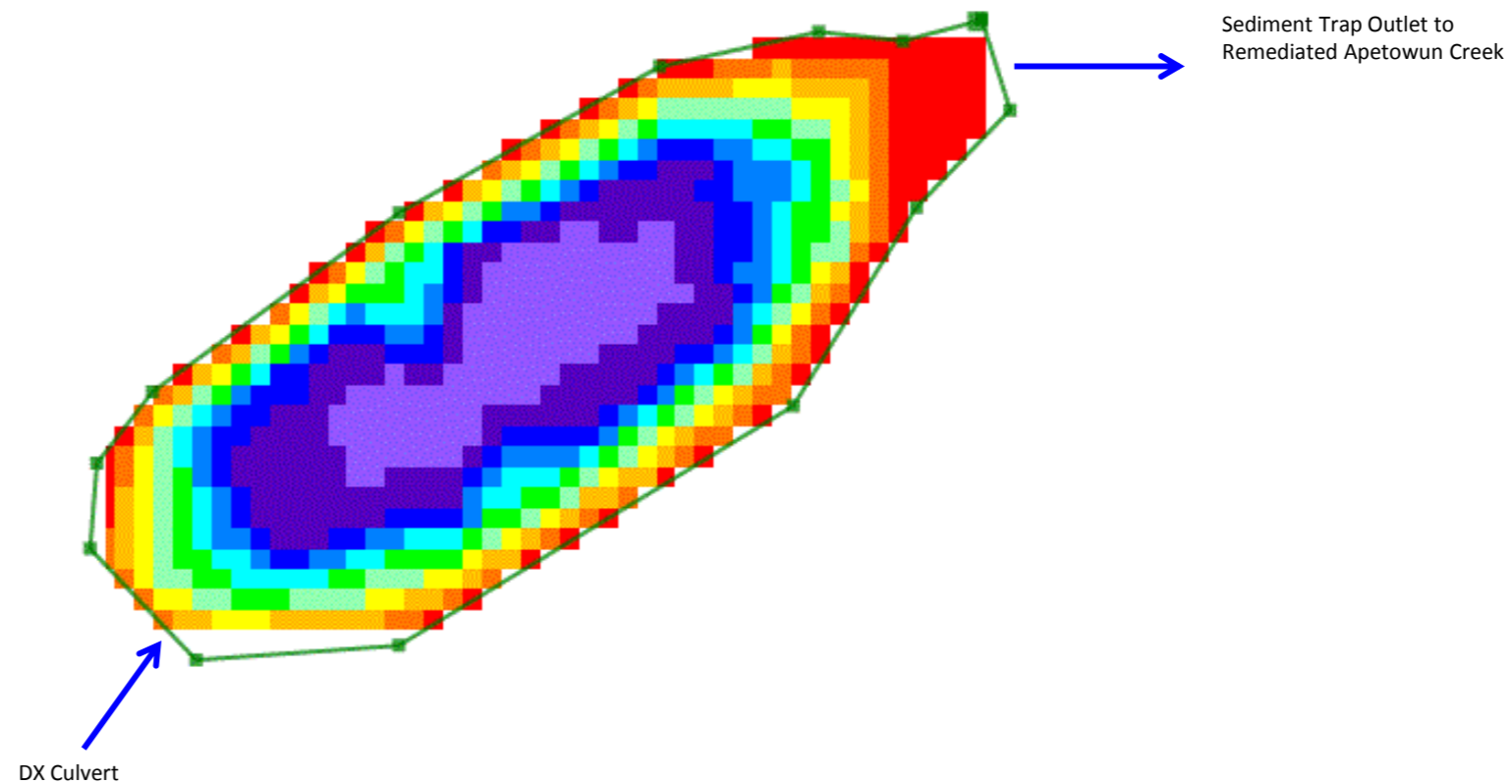


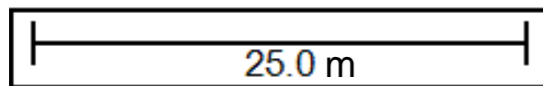


Depth (m)



0.00	0.25
0.25	0.50
0.50	0.75
0.75	1.00
1.00	1.25
1.25	1.50
1.50	1.75
1.75	2.00
2.00	2.25
2.25	2.50
2.50	2.75



May 29, 2014 As Built Summary (No Bathymetry Available)	
Surveyed Water Level	1,264.75 m
Surveyed Surface Area	792 m ²
Surveyed Water Volume	1,414 m ³
July 29, 2014 Summary	
Surveyed Water Level	1,264.93 m
Surveyed Surface Area	747 m ²
Surveyed Water Volume	1,128 m ³
Adjusted Water Volume (see note 2)	1,007 m ³
Sediment Accumulation	407 m ³



Notes:

- Bathymetric survey data provided by client dated July 29, 2014. Bathymetric contour plots generated by Eye4Software Hydromagic Version 6.0.14.624. As-Built survey data based on May 30, 2014 survey by Foothills Surveys Ltd. As-built drawings were issued July 7, 2014.
 - Bathymetry water volume is corrected to water level 1264.75 m
-  Shoreline survey data provided by client
 Flow Direction



Disclaimer: The information contained herein may be compiled from numerous third party materials that are subject to periodic change without notification. While every effort has been made by Matrix Solutions Inc. to ensure the accuracy of the information presented at the time of publication, Matrix Solutions Inc. assumes no liability for any errors, omissions, or inaccuracies in third party material.

Stamp

Revision

No.	Date	Description	By
1	May 5, 2015	ISSUED FOR FINAL	KC
0	April 30, 2015	ISSUED FOR CLIENT REVIEW	KC
Date: April 2015 Project: 5821-522 Technical: C.Cain Reviewer: K. Curtis Drawn: C.Cain			

Westmoreland Coal Company

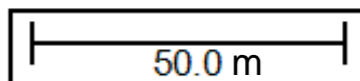
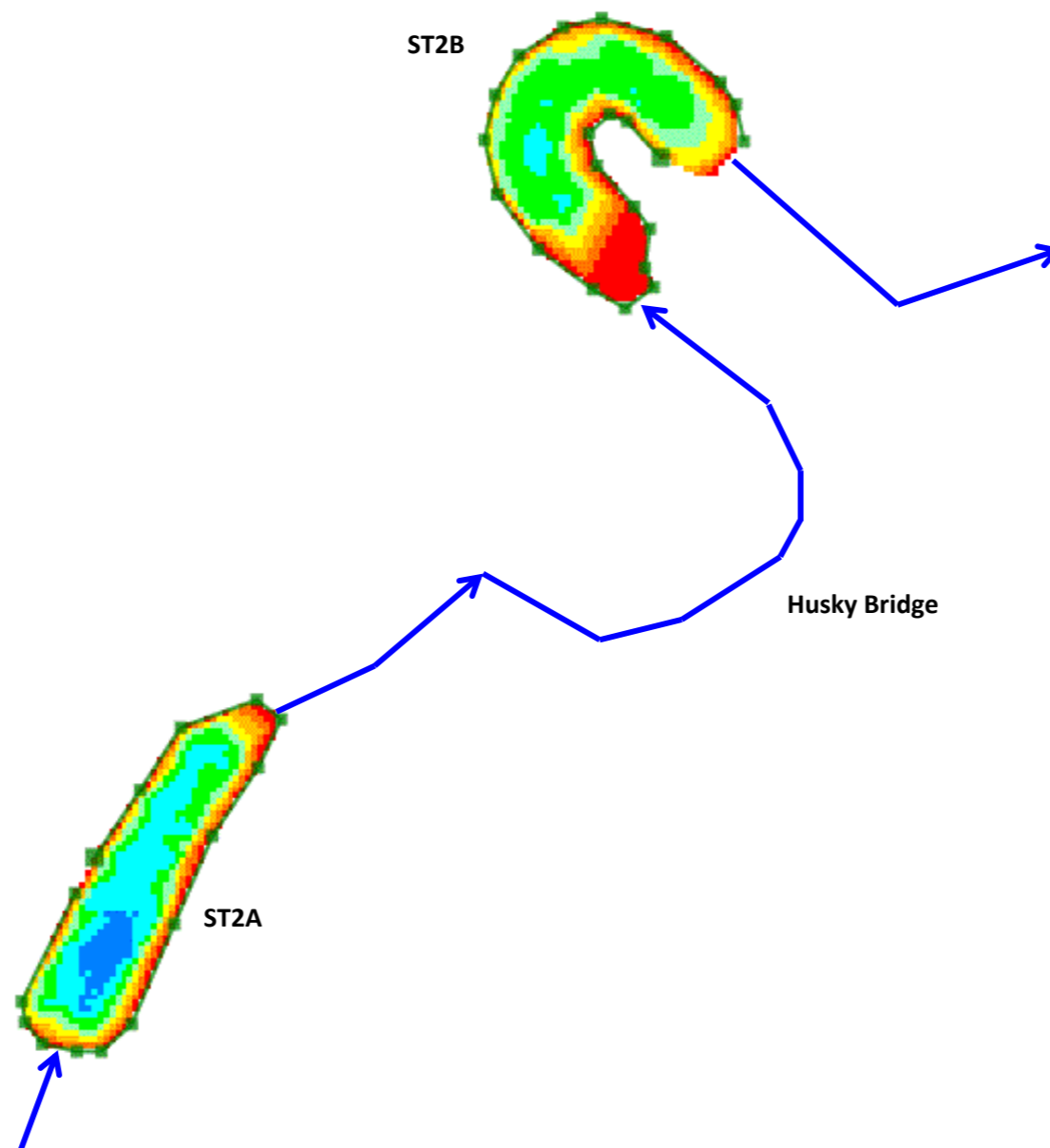
**Sediment Trap 1
(ST1)**

Apetowun Creek Sediment Control Trap Bathymetry



Depth (m)

	0.00	0.25
	0.25	0.50
	0.50	0.75
	0.75	1.00
	1.00	1.25
	1.25	1.50
	1.50	1.75
	1.75	2.00



Notes:

- Bathymetric survey data provided by client dated July 29, 2014 and July 30, 2014. Bathymetric contour plots generated by Eye4Software Hydromagic Version 6.0.14.624. As Built survey data based on June 1, 2014 survey by Foothills Surveys Ltd. As-built drawings were issued July 7, 2014.
- ST2A Bathymetry water volume is corrected to water level 1,223.38 m and ST2B Bathymetry water volume is corrected to water level 1,222.0 m

Shoreline survey data provided by client

Flow Direction

ST2B Summary

June 1, 2014 As Built Summary
(No Bathymetry Available)

Surveyed Water Level	1,222.0 m
Surveyed Surface Area	1,139 m ²
Surveyed Water Volume	1,436 m ³

July 29, 2014 Summary

Surveyed Water Level	1,222.37 m
Surveyed Surface Area	1,163 m ²
Surveyed Water Volume	1,046 m ³
Adjusted Water Volume (see note 2)	720 m ³
Sediment Accumulation	715 m ³

ST2A Summary

June 1, 2014 As Built Summary
(No Bathymetry Available)

Surveyed Water Level	1,223.38 m
Surveyed Surface Area	984.4 m ²
Surveyed Water Volume	985.2 m ³

July 30, 2014 Summary

Surveyed Water Level	1,223.77 m
Surveyed Surface Area	1,019 m ²
Surveyed Water Volume	1,187 m ³
Adjusted Water Volume (see note 2)	842 m ³
Sediment Accumulation	143 m ³



Disclaimer: The information contained herein may be compiled from numerous third party materials that are subject to periodic change without notification. While every effort has been made by Matrix Solutions Inc. to ensure the accuracy of the information presented at the time of publication, Matrix Solutions Inc. assumes no liability for any errors, omissions, or inaccuracies in third party material.

Stamp

Revision

No.	Date	Description	By
1	May 5, 2015	ISSUED FOR FINAL	KC
0	April 30, 2015	ISSUED FOR CLIENT REVIEW	KC
Date: April 2015 Project: 5821-522 Technical: C.Cain Reviewer: K. Curtis Drawn: C.Cain			

Westmoreland Coal Company

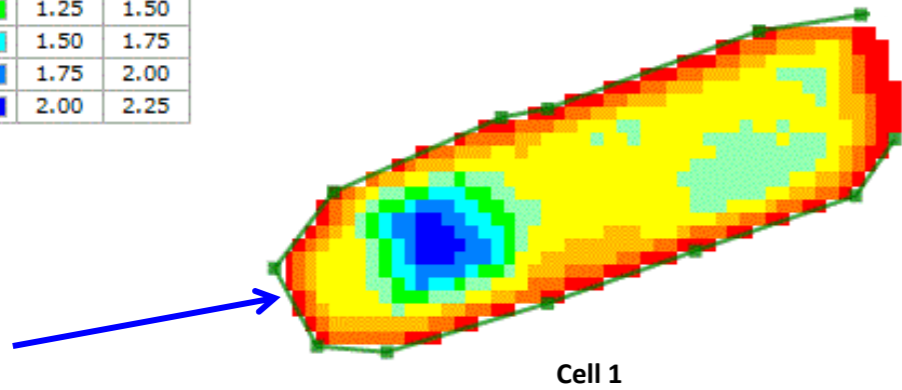
Sediment Trap 2
(ST2A and ST2B)

Apetowun Creek Sediment Control Trap Bathymetry

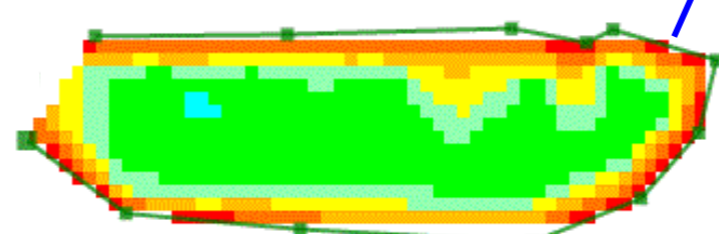


Depth (m)

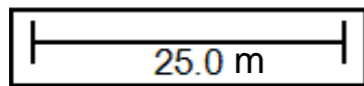
Red	0.00	0.25
Orange	0.25	0.50
Yellow	0.50	0.75
Light Green	0.75	1.00
Green	1.00	1.25
Light Blue	1.25	1.50
Blue	1.50	1.75
Dark Blue	1.75	2.00
Dark Blue	2.00	2.25



Cell 1



Cell 2



Notes:

- Bathymetric survey data provided by client dated July 29, 2014. Bathymetric contour plots generated by Eye4Software Hydromagic Version 6.0.14.624. As Built survey data based on June 2, 2014 survey by Foothills Surveys Ltd. As-built drawings were issued July 7, 2014.
- Cell 1 Bathymetry water volume is corrected to water level 1,024.10 m and Cell 2 Bathymetry water volume is corrected to water level 1,021.60 m

Shoreline survey data provided by client

Flow Direction

Cell 1 Summary

June 2, 2014 As Built Summary
(No Bathymetry Available)

Surveyed Water Level	1,024.1 m
Surveyed Surface Area	741.5 m ²
Surveyed Water Volume	726.2 m ³

July 29, 2014 Summary

Surveyed Water Level	1,024.35m
Surveyed Surface Area	662 m ²
Surveyed Water Volume	548.8m ³
Adjusted Water Volume (see note 2)	407.1 m ³
Sediment Accumulation	319 m ³

Cell 2 Summary

June 2, 2014 As Built Summary
(No Bathymetry Available)

Surveyed Water Level	1,021.6 m
Surveyed Surface Area	775.0 m ²
Surveyed Water Volume	737.2 m ³

July 30, 2014 Summary

Surveyed Water Level	1,021.95 m
Surveyed Surface Area	651 m ²
Surveyed Water Volume	682m ³
Adjusted Water Volume (see note 2)	469.6 m ³
Sediment Accumulation	268 m ³



Disclaimer: The information contained herein may be compiled from numerous third party materials that are subject to periodic change without notification. While every effort has been made by Matrix Solutions Inc. to ensure the accuracy of the information presented at the time of publication, Matrix Solutions Inc. assumes no liability for any errors, omissions, or inaccuracies in third party material.

Stamp

Revision

No.	Date	Description	By
1	May 5, 2015	ISSUED FOR FINAL	KC
0	April 30, 2015	ISSUED FOR CLIENT REVIEW	KC
Date: April 2015 Project: 5821-522 Technical: C.Cain Reviewer: K. Curtis Drawn: C.Cain			

Westmoreland Coal Company

**Sediment Trap 3
(ST3)**

Apetowun Creek Sediment Control Trap Bathymetry